

**D** DEPUTY TO THE DIRECTOR NEAR.A TO BE CONFIRMED

**D** DEPUTY TO THE DIRECTOR NEAR.D TO BE CONFIRMED

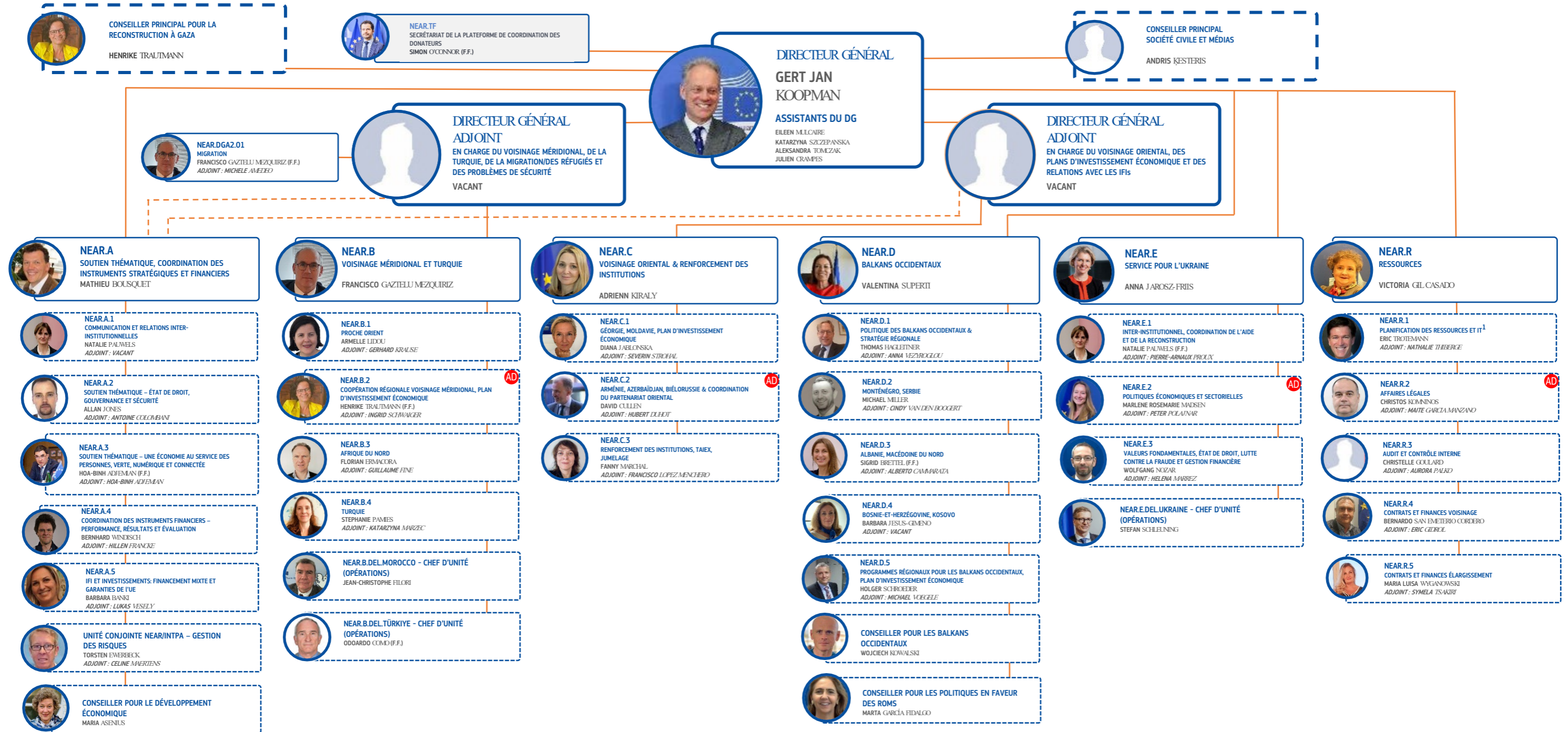
**D** DEPUTY TO THE DIRECTOR

<sup>1</sup>INCLUDES THE HR CORRESPONDENT AND THE DMO

- REPORTING LINES: - UNITS NEAR.A.1 AND NEAR.A.2 HAVE A FUNCTIONAL REPORTING LINE THROUGH DIRECTOR NEAR.A TO DEPUTY DIRECTOR-GENERAL NEAR.DGA2, - THE ADVISER, UNITS NEAR.A.3, NEAR.A.4, NEAR.A.5 AND THE COMMON NEAR/INTPA UNIT HAVE A FUNCTIONAL REPORTING LINE THROUGH DIRECTOR NEAR.A TO DEPUTY DIRECTOR-GENERAL NEAR.DGA1.

- SECONDED MANAGERS: VASSILIS MARAGOS (SECONDED AS HOD ARMENIA), KATARINA MATHERNOVA (SECONDED AS HOD UKRAINE), LAWRENCE MEREDITH (SECONDED AS HOD NEW ZEALAND)

- ENTITIES WITH STAFF IN EU DELEGATIONS: NEAR.B.1, NEAR.B.3, NEAR.B.4, NEAR.C.1, NEAR.C.2, NEAR.D.2, NEAR.D.3, NEAR.D.4, NEAR.R.1, NEAR.R.4, NEAR.R.5, NEAR.E.2, NEAR.E.3



AD ADJOINT DU DIRECTEUR NEAR.A À CONFIRMER

AD ADJOINT DU DIRECTEUR NEAR.D À CONFIRMER

AD ADJOINT DU DIRECTEUR

<sup>1</sup> INCLUT LE HR CORRESPONDENT ET LE DMO

- REPORTING : - LES UNITÉS NEAR.A.1 ET NEAR.A.2 ONT UN REPORTING FONCTIONNEL VIA LE DIRECTEUR NEAR.A AU DIRECTEUR GÉNÉRAL ADJOINT NEAR.DGA2, - LE CONSEILLER, LES UNITÉS NEAR.A.3, NEAR.A.4, NEAR.A.5 ET L'UNITÉ CONJOINTE NEAR/INTPA ONT UN REPORTING FONCTIONNEL VIA LE DIRECTEUR NEAR.A AU DIRECTEUR GÉNÉRAL ADJOINT NEAR.DGA1.

- ENCADREMENT EN DÉTACHEMENT: VASSILIS MARAGOS (DÉTACHÉ EN TANT QUE CHEF DE DEL ARMÉNIE), KATARINA MATHERNOVA (DÉTACHÉE EN TANT QUE CHEF DE DEL UKRAINE), LAWRENCE MEREDITH (DÉTACHÉ EN TANT QUE CHEF DE DEL NOUVELLE-ZÉLANDE)

- ENTITÉS AYANT DU PERSONNEL DANS LES DÉLÉGATIONS DE L'UE: NEAR.B.1, NEAR.B.3, NEAR.B.4, NEAR.C.1, NEAR.C.2, NEAR.D.2, NEAR.D.3, NEAR.D.4, NEAR.R.1, NEAR.R.4, NEAR.R.5, NEAR.E.2, NEAR.E.3